



Adjusting the latch rod assembly on a C Series toolbox

Adjust the latch rod assembly on a C Series toolbox when...

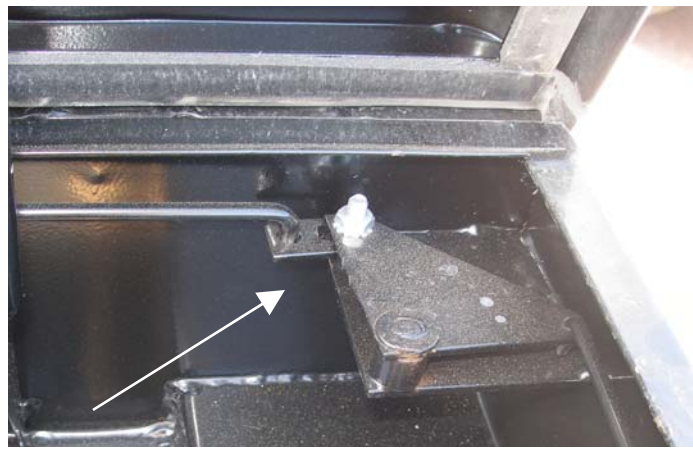
1. Opening, or locking the latch on one side of the box does not activate the one on the other side (latches are not synchronized).

With all the heavy duty use our C-Series boxes get, once in a while the latch rod assembly may need adjustment. The assembly keeps the latches synchronized to allow opening from either side of the vehicle. If your customer reports a latch that sticks, try this simple fix.

First, loosen the screw on the *latch control plate* (located on the passenger side front corner next to the cab).



Then move the plate slightly in the direction of the latch that is sticking



Tighten the screw back down and both latches should open simultaneously. Apply lithium grease to the striker and moving parts of the paddle latch.

For further assistance, contact technical support at RKI, Inc.